



Noise Monitoring Result

Day Time (0700 - 1900hrs on normal weekdays)

Location: M1a - Harbour Road Sports Centre

Date	Time	Weather	Measurement Noise Level			Baseline Level	Construction Noise Level	Limit Level
			Leq	L10	L90	Leq	Leq	Leq
Unit: dB(A), (30-min)								
31/07/12	13:55	Fine	72.8	75.0	69.0	72	64	75
07/08/12	10:25	Fine	73.8	76.5	68.5	72	69	75
14/08/12	10:30	Fine	74.7	77.0	71.0	72	71	75
23/08/12	10:28	Fine	74.0	76.5	70.0	72	69	75

Location: M2b - Noon-day gun area

Date	Time	Weather	Measurement Noise Level			Baseline Level	Construction Noise Level	Limit Level
			Leq	L10	L90	Leq	Leq	Leq
Unit: dB(A), (30-min)								
31/07/12	13:02	Fine	71.0	72.0	69.5	68	68	75
07/08/12	11:20	Fine	69.8	70.5	68.0	68	66	75
14/08/12	11:30	Fine	71.1	72.5	68.0	68	69	75
23/08/12	11:17	Fine	71.6	72.0	70.0	68	69	75

Location: M3a - Tung Lo Wan Fire Station

Date	Time	Weather	Measurement Noise Level			Baseline Level	Construction Noise Level	Limit Level
			Leq	L10	L90	Leq	Leq	Leq
Unit: dB(A), (30-min)								
31/07/12	10:10	Fine	68.9	70.0	65.5	69	52	75
07/08/12	13:00	Fine	69.2	70.1	65.4	69	59	75
14/08/12	13:00	Fine	66.8	68.5	64.0	69	67	75
23/08/12	13:15	Sunny	66.7	68.5	64.5	69	67	75

Location: M4b - Victoria Centre

Date	Time	Weather	Measurement Noise Level			Baseline Noise Level	Construction Noise Level	Limit Level
			Leq	L10	L90	Leq	Leq	Leq
Unit: dB(A), (30min)								
31/07/12	10:51	Fine	71.6	72.5	69.5	67	70	75
07/08/12	13:50	Fine	72.9	74.5	70.5	67	72	75
14/08/12	13:45	Fine	72.4	73.5	70.5	67	71	75
24/08/12	09:37	Fine	74.1	75.7	72.2	67	73	75

*Due to the equipment repair, the noise monitoring was rescheduled from 23 August 2012 to 24 August 2012

Location: M5b - City Garden

Date	Time	Weather	Measurement Noise Level			Baseline Level	Construction Noise Level	Limit Level
			Leq	L10	L90	Leq	Leq	Leq
Unit: dB(A), (30min)								
31/07/12	08:26	Fine	69.7	70.5	68.0	68	65	75
07/08/12	14:50	Fine	70.6	72.0	68.5	68	67	75
14/08/12	14:30	Fine	71.8	72.5	69.0	68	69	75
23/08/12	14:25	Sunny	71.8	73.0	70.0	68	69	75

Location: M6 - HK Baptist Church Henrietta Secondary School

Date	Time	Weather	Measurement Noise Level			Baseline Level	Construction Noise Level	Limit Level
			Leq	L10	L90	Leq	Leq	Leq
Unit: dB(A), (30-min)								
31/07/12	09:10	Fine	73.4	74.5	71.5	71	70	70
07/08/12	15:29	Fine	72.9	74.0	71.0	71	69	70
14/08/12	15:13	Fine	73.1	73.8	72.7	71	69	70
24/08/12	10:25	Fine	75.2	76.4	73.3	71	73	70

*Due to the equipment repair, the noise monitoring was rescheduled from 23 August 2012 to 24 August 2012



Noise Monitoring Result

Day Time (0700 - 1900hrs on normal weekdays)

Location: M7e - International Finance Centre (Eastern End of Podium) (Reference Station)

Date	Time	Weather	Measurement Noise Level			Baseline Level	Construction Noise Level	Limit Level
			Leq	L10	L90	Leq	Leq	Leq
Unit: dB(A), (30-min)								
31/07/12	15:29	Fine	73.0	74.5	69.5	67	72	N/A
07/08/12	08:00	Fine	69.5	71.0	65.0	67	66	N/A
14/08/12	08:00	Fine	69.4	71.0	66.5	67	66	N/A
23/08/12	08:02	Fine	72.1	73.8	70.3	67	71	N/A

Location: M7w - International Finance Centre (Western End of Podium)

Date	Time	Weather	Measurement Noise Level			Baseline Level	Construction Noise Level	Limit Level
			Leq	L10	L90	Leq	Leq	Leq
Unit: dB(A), (30-min)								
31/07/12	14:52	Fine	68.0	70.5	65.0	69	68	75
07/08/12	08:35	Fine	66.8	68.0	64.5	69	67	75
14/08/12	08:30	Fine	68.7	69.5	66.5	69	69	75
23/08/12	08:35	Fine	67.3	68.0	65.0	69	67	75

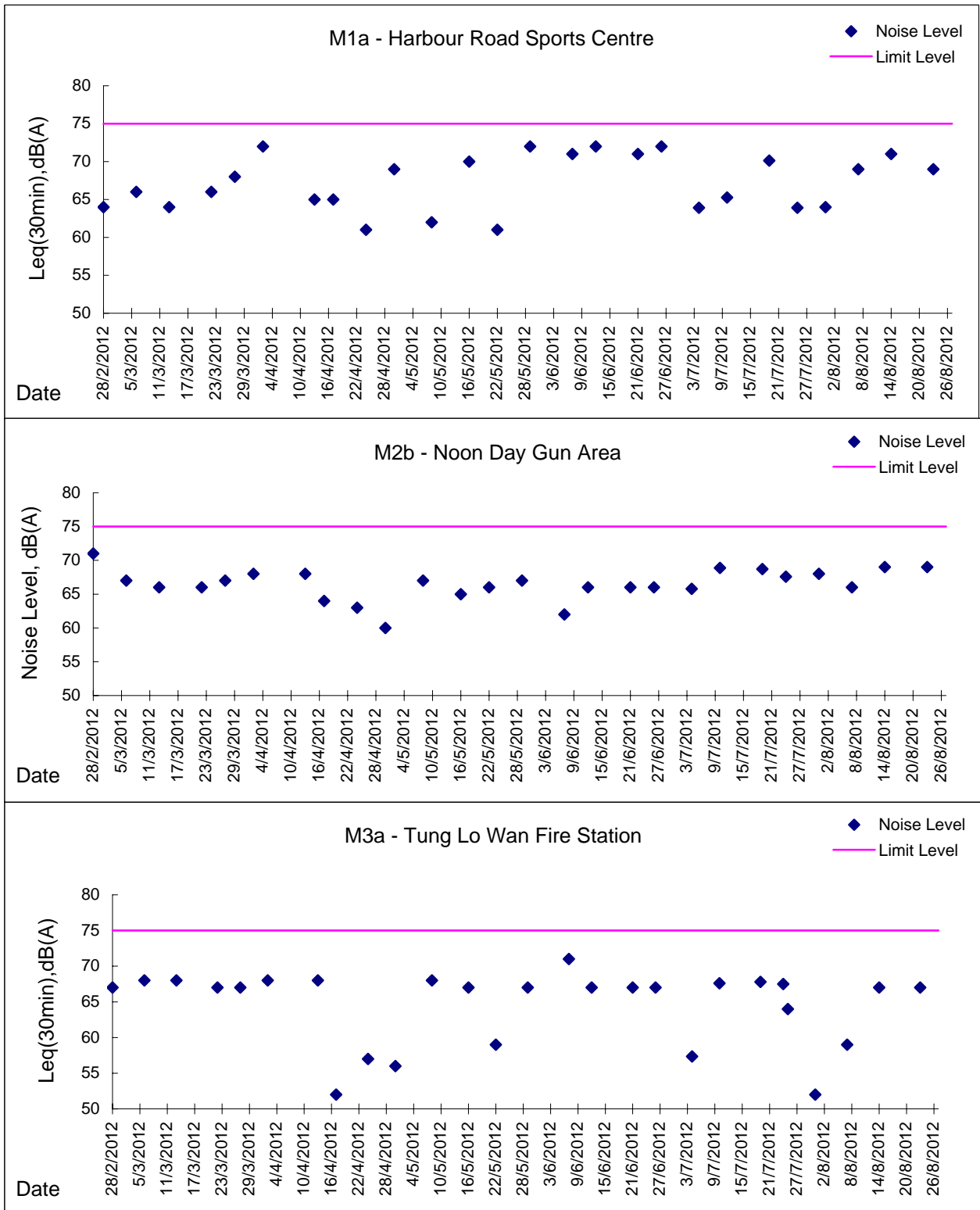
Location: M8 - City Hall

Date	Time	Weather	Measurement Noise Level			Baseline Level	Construction Noise Level	Limit Level
			Leq	L10	L90	Leq	Leq	Leq
Unit: dB(A), (30-min)								
07/08/12	09:30	Fine	65.5	71.0	59.5	64	61	70
14/08/12	09:45	Fine	63.5	64.5	57.0	64	64	70
23/08/12	09:36	Cloudy	61.3	63.0	58.0	64	61	70



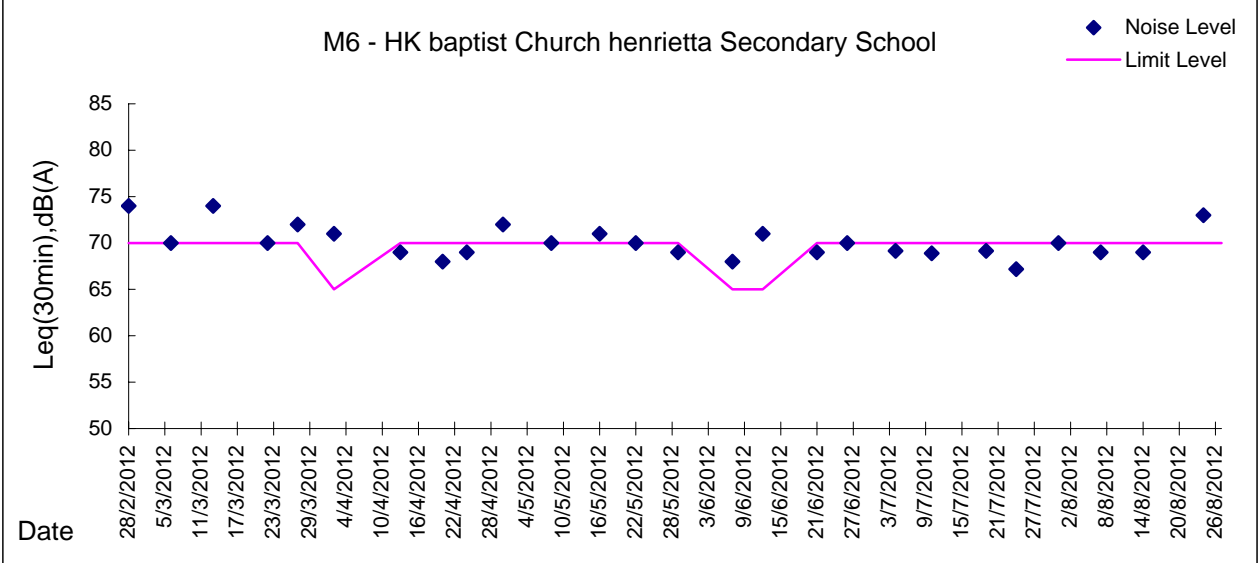
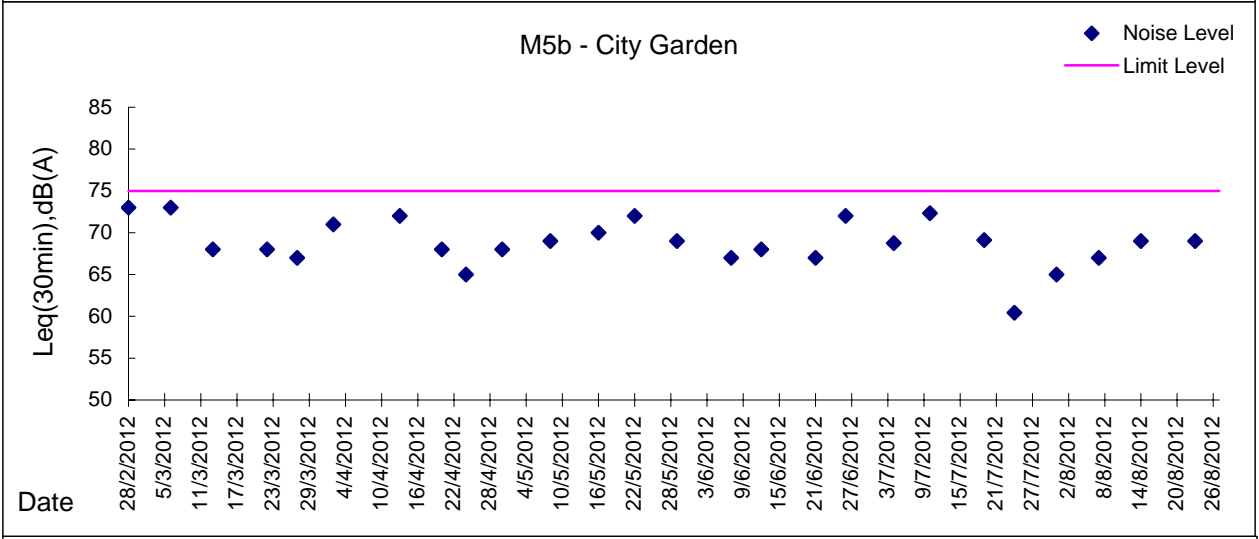
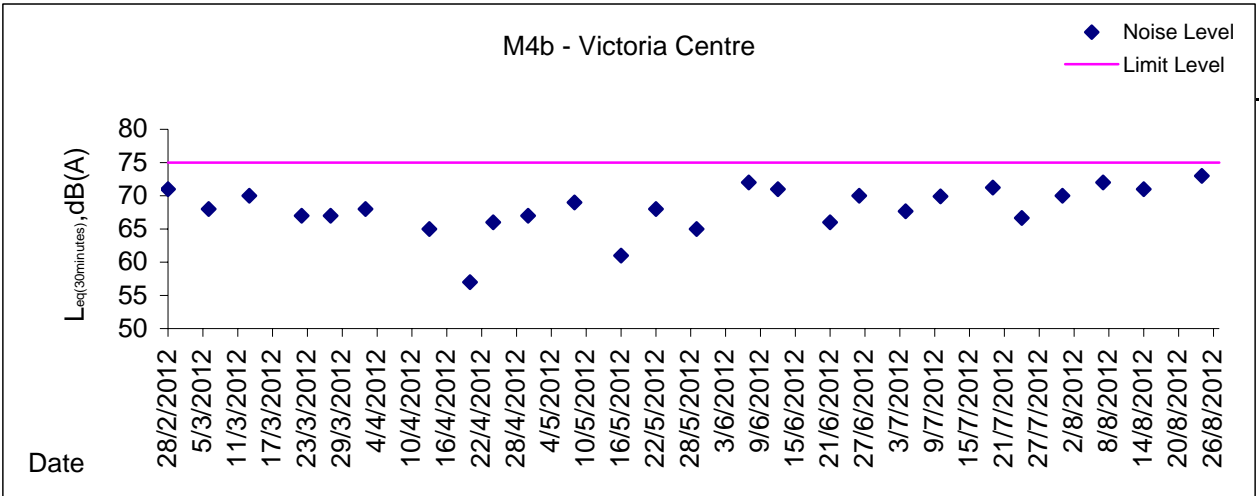
Graphic Presentation of Noise Monitoring Result

Day Time (0700 - 1900hrs on normal weekdays)



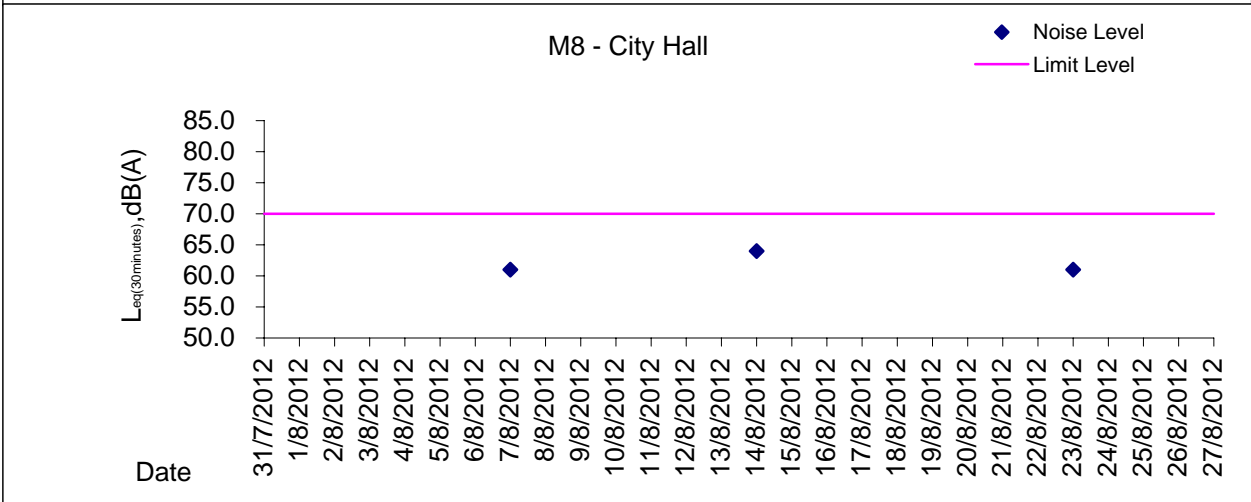
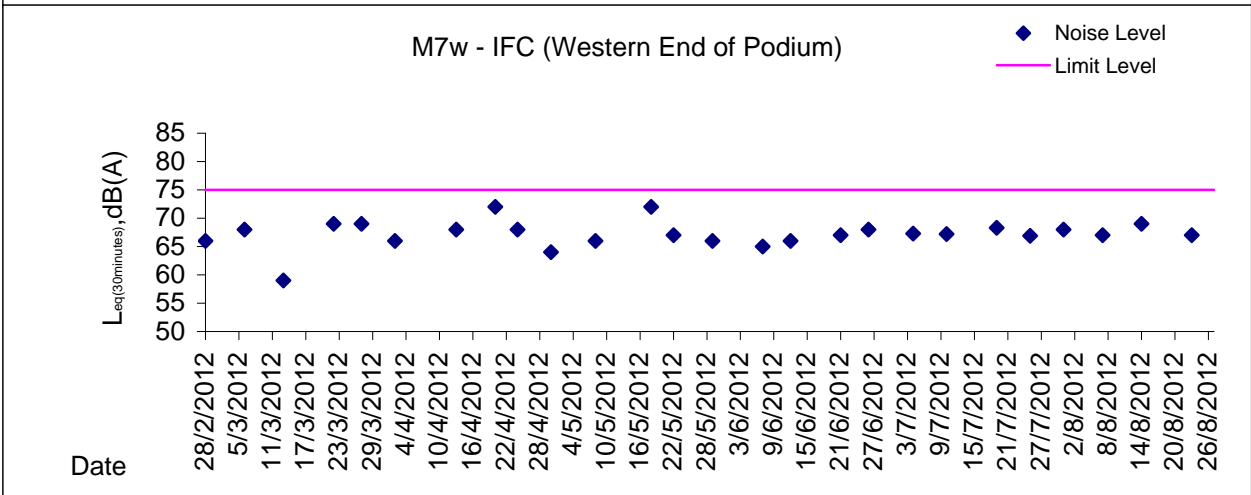
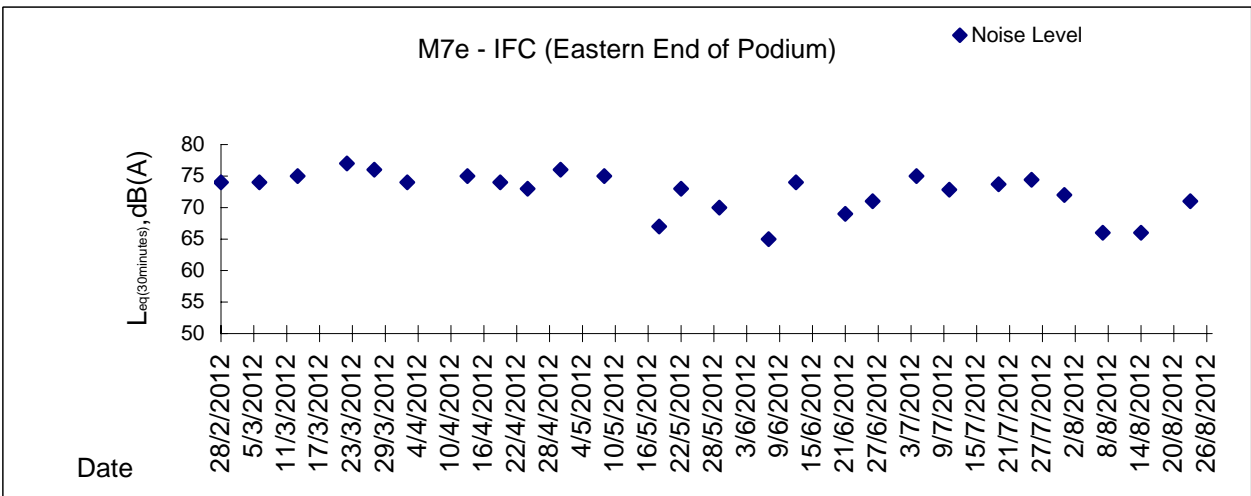


Graphic Presentation of Noise Monitoring Result
Day Time (0700 - 1900hrs on normal weekdays)





Graphic Presentation of Noise Monitoring Result
Day Time (0700 - 1900hrs on normal weekdays)



* Remark: M7e - IFC (Eastern End of Podium) is a reference monitoring station